

**South Eastern Hampshire Governing  
Body Meeting**

**Richard Samuel  
HIOW STP Lead**

**Meeting the many opportunities and challenges facing the local health and care system around the need to **empower people to stay well** and to **provide safe, high quality, consistent and affordable health and care to everyone.****

# The case for change



Health and care funding is increasingly outstripped by increasing demand

Workforce pressures

Accessing care, information and support is often complicated and confusing

Too much variation in outcomes across the area

Increasing pace of technological change

Health care today is too reactive

*Healthier lives, world class sustainable services, strong primary and community care*

# The case for change



Health and care funding is increasingly outstripped by increasing demand

Workforce  
pro

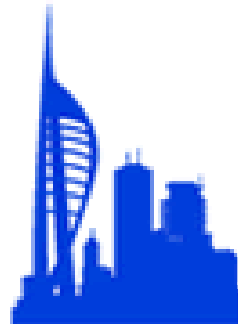
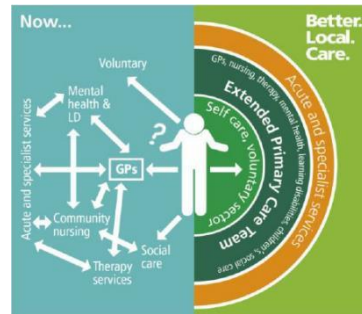
Accessing care, information and support is often complicated and confusing

Increasing pace of technological change

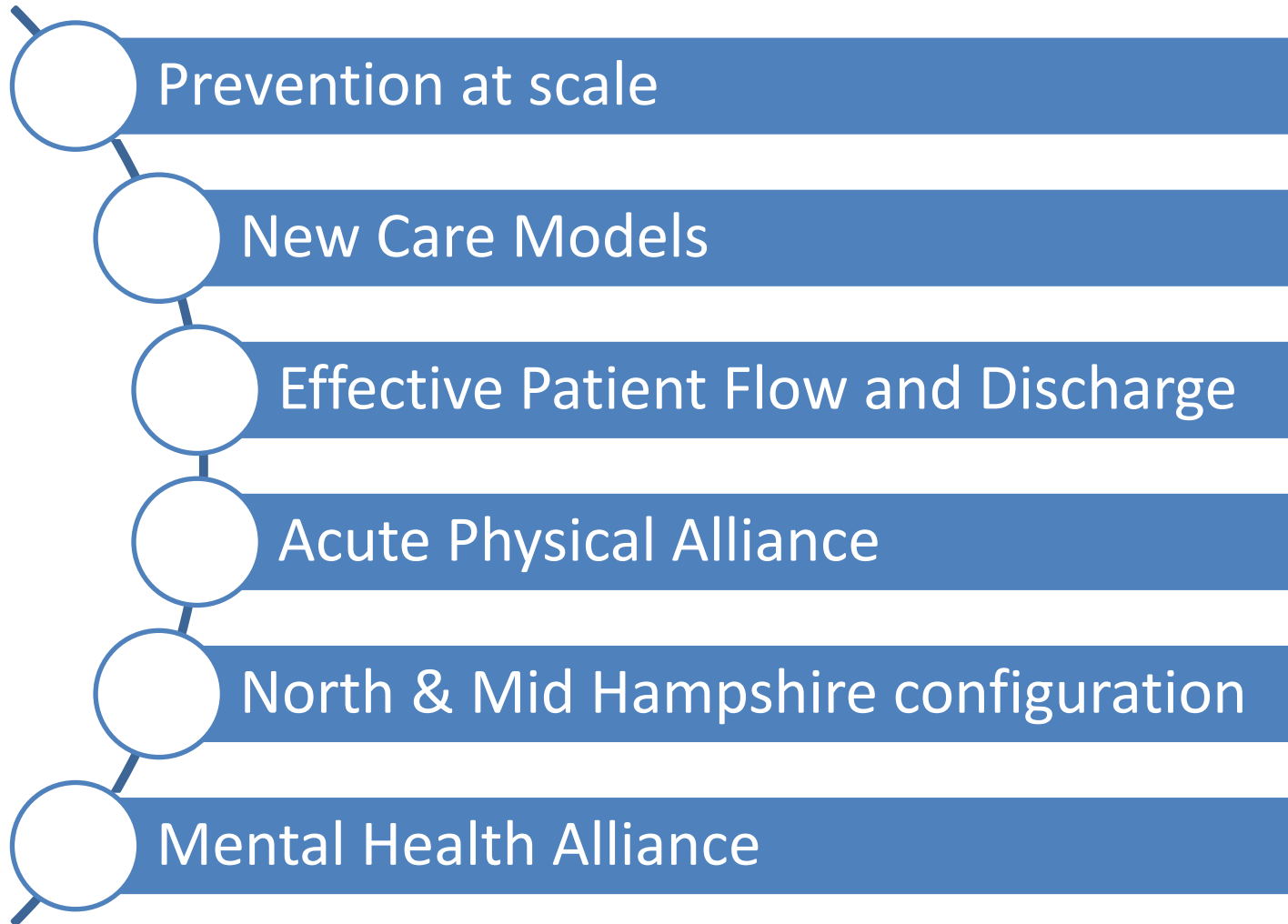
Health  
is too reactive

**£0.3 billion  
MORE over  
next five years  
to invest in  
health care**

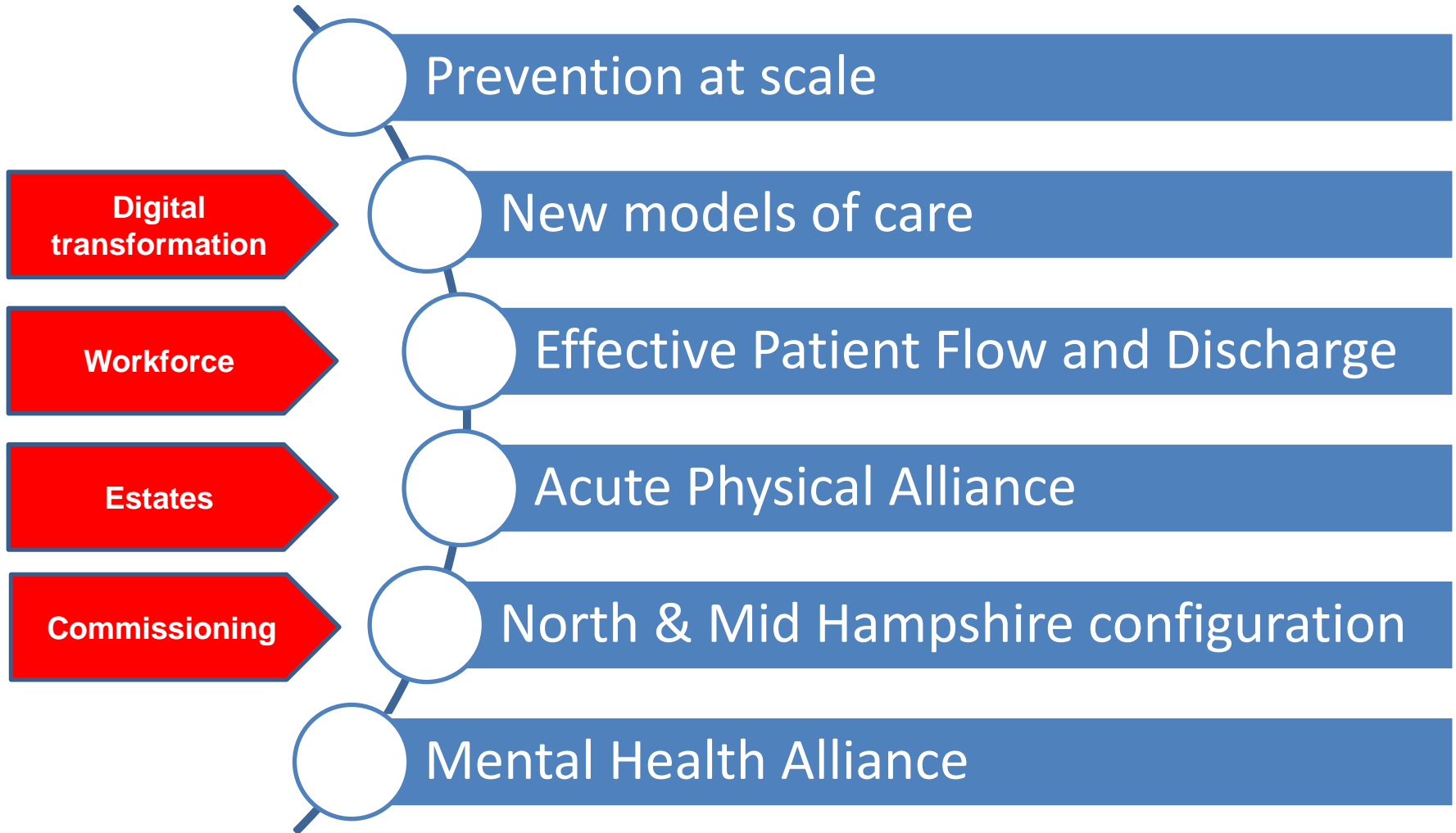
# Engaging with local people



# Focus for transformation



# Focus for transformation



*Healthier lives, world class sustainable services, strong primary and community care*

# Looking to the future



We are creating a new genomic medicine service with the NHS -  
To support better diagnosis and better treatments.

Find out more

*Healthier lives, world class sustainable services, strong primary and community care*



**By 2021**



**Living in good  
health for  
longer**

**World class  
care that is safe,  
consistent and  
affordable**

**Control of your  
own health and  
information**

**More health and  
care provided  
closer to or in  
your home**

**Proactive,  
targeted care**

*Healthier lives, world class sustainable services, strong primary and community care*

# Questions?